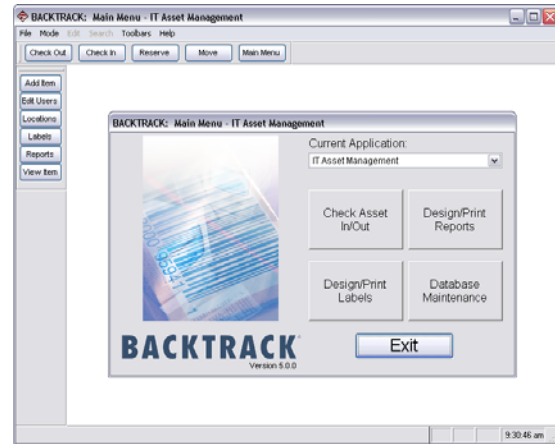


BACKTRACK®

Customizable Asset and Inventory Tracking Software with the Flexibility to Meet All Your Tracking Needs

QUICK SPECS

- For Windows 2000, XP, Server 2003, or Vista
- Track the exact location, movement and usage of any item accurately and efficiently
- Flexible setup and configuration – there are no limits to the number or type of tracking applications that BACKTRACK can handle
- Wizard-driven Application Templates make tracking setup quick and easy
- Backend database support now includes Microsoft SQL Server and SQL Express, Microsoft Access, and Microsoft Visual FoxPro



APPLICATION TEMPLATES

BACKTRACK's **Application Templates** allow you to get up and running quickly by simply modifying an existing tracking application to meet your needs. BACKTRACK includes over a dozen ready-to-use templates for common tracking applications such as Document & File Tracking, Equipment Tracking, General Inventory, Asset Management, Archival/Offsite Storage, Libraries and more.

CUSTOMIZABLE TRACKING DATABASES

Four **Tracking Databases** — the User Database, Item Database, Location Database, and Transaction Database — are the key to BACKTRACK's flexible tracking capabilities. With BACKTRACK you can easily transfer or manipulate data via the keyboard or using a portable data terminal. In addition, the ability to import/export popular data formats allows you to share BACKTRACK data with your existing business applications.

LABEL DESIGNER

BACKTRACK's **Label Design Capability** enables you to build labels unique to a business or application. The Label Designer works with TEKLYNX' LABEL MATRIX, LABELVIEW, and CODESOFT label design software packages.

REPORT DESIGNER

The powerful **Report Designer** provides unlimited reporting capabilities. BACKTRACK's Report Designer allows you to create and print custom reports that meet your specific tracking needs.

DEVICE SUPPORT

With many supported **Mobile Devices**, BACKTRACK makes remote tracking activities quick and easy. Using mobile devices with BACKTRACK, users can add items and perform physical inventory activities no matter where they are. For a complete list of supported devices, go to www.teklynx.com/backtrack/devices.